

# CHP Technical Data Sheet for

## Quanto D1600 Natural Gas Indoor Canopy

### Quanto Series



## Power Therm

### Standard Features

- High performance electrical efficiency
- Fully modulating output
- 3 packages – Open frame, Indoor Canopy, Outdoor Container
- Sophisticated web remote monitoring
- Digital engine management
- Long service intervals
- 27 month warranty
- Standby power options
- Low noise options



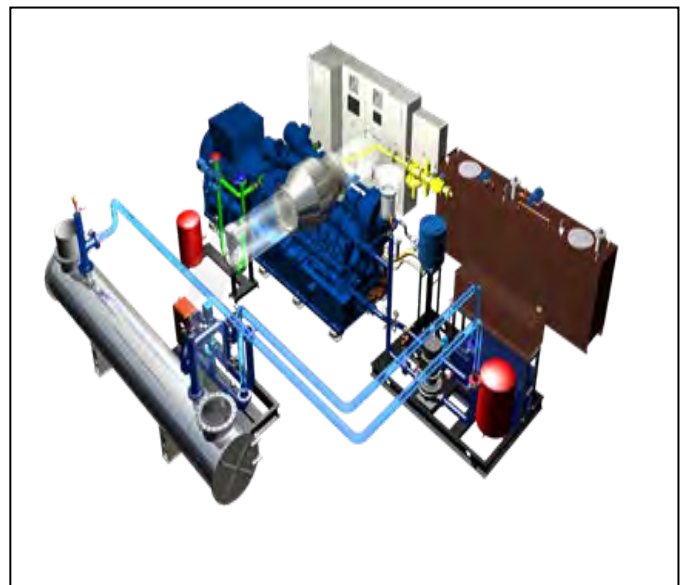
The Quanto series benefits from having MWM’s high performance gas engines. Available to run on a variety of gas fuels. Multiple units can be run in synch, and high-end digital controllers make synchronising with the mains simple.

ELECTRICITY OUTPUT	THERMAL OUTPUT	ELECTRIC EFFICIENCY	THERMAL EFFICIENCY	TOTAL EFFICIENCY
1580kWE	1650kWt	42.2%	44.6%	86.8%

shentongroup has the exclusive distributorship for Tedom products in the UK, Ireland and Channel Islands.

We provide dedicated services for CHP projects, ranging from design assistance, through project management, to commissioning and long-life support.

Tedom is a global CHP manufacturer with 600 employees. There are over 2,000 Tedom CHP units in service in over 35 countries worldwide.



## Basic Technical Data

nominal electrical output	1560	kW		
maximum heat output <sup>1)</sup>	1650	kW		
load	50	75	100	%
maximum heat output	963	1304	1650	kW
fuel input	1999	2846	3696	kW
electrical efficiency	39.0	41.1	42.2	%
heat efficiency	48.2	45.8	44.6	%
total efficiency (fuel utilization)	87.2	86.9	86.8	%
gas consumption	212	301	391	m <sup>3</sup> /hr

	EKO <sup>2)</sup>	PE/I <sup>3)</sup>	
nominal electrical output	1560	1935 <sup>4)</sup>	kW/kVA
maximum heat output	1884	1788	kW
fuel input	3696	3696	kW
electrical efficiency	42.2	41.9	%
heat efficiency	51.0	48.4	%
total efficiency (fuel utilization)	93.2	90.3	%
fuel consumption at 100% output	391	391	m <sup>3</sup> /hr

The Basic Technical Data are applicable for the standard conditions pursuant to the "Technical instructions" document.

The minimum permanent electrical output must not drop below 50 % of the nominal output.

Gas consumption is expressed under the invoicing conditions (15°C, 101.325 kPa).

Gas consumption tolerance, or fuel input tolerance, at 100% load is +5%.

Tolerances of other parameters are mentioned in "Technical Instructions-Validity of Technical Data" document.

1) Maximum heat output is a sum of heat outputs of secondary circuit with exhaust gas cooled to 120°C and aftercooler circuit

2) Technical parameters of CHP unit with economizer (an option). Heat output indicated is based on inlet water temperature 70°C into additional exhaust gas exchanger and with exhaust gas cooled to 85°C.

3) Technical parameters of CHP unit for emergency / island mode (an option).

4) It is non-overload able output for  $\cos \varphi = 0.8$ .

## Emissions

emissions <sup>1)</sup>	NOx	CO	
with 5% of O <sub>2</sub> in exhaust gases	250	300	mg/Nm <sup>3</sup>

1) Indicated emission values of NOx are possible to decrease below 100mg/Nm<sup>3</sup> (option).

## Generator

type	MJB 500 MC4		
producer	MARELLI		
cos $\varphi$	0.8/1.0		
efficiency in the working point	96.4/97.4	%	
voltage	400	V	
frequency	50	Hz	

## Engine

type	TCG 2020 V16		
producer	MWM		
number of cylinders	16		
arrangement of cylinders	V		
bore × stroke	170/195	mm	
displacement	71	dm <sup>3</sup>	
compression ratio	13.0 : 1		
speed	1500	rpm	
nominal oil consumption	0.15	g/kWh	
max. engine output	1602	kW	

TCG2020V16 400V natural gas; 26.01.2018 250NOx

## Thermal System

### Secondary Circuit

heat carrier	water		
circuit's heat output	1650	kW	
nominal water temperature, input / output	70/90	°C	
nominal temperature drop	20	°C	
return water temperature, min / max	40/70	°C	
nominal flow rate	1188	l/min	
max. working pressure	600	kPa	
min. pressure in system	100	kPa	
water volume in CHP unit circuit <sup>1)</sup>	1520	dm <sup>3</sup>	
pressure loss at the nominal flow rate <sup>1)</sup>	90	kPa	

1) total value (engine-generator in sound enclosure and exhaust gas module without connecting pipeline)

### Utilization of exhaust gas output for other purposes

heat output of exhaust gases (cooling to 120°C)	823	kW
exhaust gas temperature	421	°C

### Primary Circuit

heat carrier	water + ethylene glycol	
ethylene glycol's concentration	35	%
circuit's heat output	827	kW
max. working pressure	300	kPa
water volume in CHP unit circuit	360	dm <sup>3</sup>

### Aftercooler Circuit

heat carrier	water + ethylene glycol	
ethylene glycol's concentration	35	%
circuit's heat output	138	kW
coolant temperature (outlet from CHP unit – informative)	44.0	°C
coolant temperature (inlet into CHP unit) max	40.0	°C
nominal flow rate	582	l/min
pressure reserve at the nominal flow rate <sup>1)</sup>	70	kPa
highest allowed maximal hydrostatic height of system	10	m
maximal connect-able volume of system outside the module of CHP unit <sup>3)</sup>	230	dm <sup>3</sup>
max. working pressure	300	kPa
min. working pressure	50	kPa
water volume in CHP unit circuit	60	dm <sup>3</sup>

1) pressure reserve of internal part for covering pressure losses of external parts of circuit (interconnection pipeline and dry cooler)

2) if connected volume overstep mentioned value, it is necessary to install into system additional expansion vessel

### Fuel, Gas Inlet

low heat value	34	MJ/m <sup>3</sup>
min. methane number	80	
gas pressure	8 - 15	kPa
max. pressure change under varying consumption	10	%
max. gas temperature	35	°C

### Combustion and Ventilation Air

unused heat removed by the ventilation air	101	kW
air temperature at the ventilation inlet min / max	20 - 35	°C
air temperature at the ventilation recommended	25	°C
amount of combustion air	6787	Nm <sup>3</sup> /hr
max. amount of ventilation air at the outlet flange	38000	m <sup>3</sup> /hr
max. air temperature at the outlet flange	50	°C
max. counter-pressure on flanges of ventilation air <sup>1)</sup>	120	Pa

1) total sum of pressure losses of connected ventilation pipeline without necessity of using additional fan

### Exhaust Gas and Condensate Outlet

amount of exhaust gases	7012	Nm <sup>3</sup> /hr
exhaust gas temperature between engine-generator set and exhaust exchanger nominal / max	421/550	°C
exhaust gas temperature, nominal / max	120/150	°C
permissible pressure loss of the interconnecting and following exhaust piping	10	mbar
speed of exhaust gases at the outlet (DN 500)	14.3	m/s

### Lubricant Charges

amount of lubrication oil in the engine	265	dm <sup>3</sup>
volume of engine additional oil tank	685	dm <sup>3</sup>
replenishment oil tank volume	500	dm <sup>3</sup>

### Noise Parameters

version	standard	option <sup>1)</sup>	
sound enclosure of CHP unit at 1m	84	dB(A)	
ventilation inlet and outlet at 1m from the silencer	80	65	dB(A)
exhaust gas outlet at 1m from the silencer flange	80	60	dB(A)

1) noise parameters can be reduced by optimizing components to the required acoustic pressure level



## Electrical Parameters

nominal voltage	230/400	V	
nominal frequency	50	Hz	
power factor <sup>1)</sup>	0,89		
nominal current at cos φ=0.8	2560	A	
generator circuit breaker	NW32 H1 3P		
short-circuit resistance of switchboard R1	40	kA	
short-circuit resistance of switchboards R2, R3, R4 and R5	10	kA	
contribution of the actual source to the short-circuit current	< 30	kA	
protection of power switchboard R1 closed/open	IP 31/00		
protection of control switchboard R2 closed/open	IP 31/00		
protection of frequency changers' switchboard R3 closed/open	IP 31/00		
protection of engine switchboard R4 closed/open	IP 31/00		
protection of cooling switchboard R5 closed/open	IP 66/00		
recommended superior protection	3000	A	
recommended connection cable <sup>2)</sup> (l < 50m, at t < 35°C)	7×NYY (3×240+120)		
power factor [-]	1	0.95	0.89
output [% P <sub>nom</sub> ]	100	100	98

2) The stated cables are for information only. A check calculation for temperature rise and voltage drop must be made according to the actual length, placement and type of the cable (maximum allowed voltage drop is 10 V)

## Colour Version

engine and generator	RAL 5010 (blue)
base frame	RAL 9017 (black)
sound enclosure	RAL 5013 (blue)

## Unit Dimensions and Weights

	Engine generator set	Exhaust gas module	
length	8100	5600	mm
width	2650	1400	mm
height	4010	2800	mm
service weight	23210	4875	kg

Ventilation silencer		
length	1580	mm
width	2180	mm
height	2500	mm
service weight	1480	kg

Exhaust silencer		
length	5700	mm
diameter	∅ 1000	mm
installation position	horizontal	mm
service weight	1200	kg

Switchboards	height [mm]	width [mm]	depth [mm]
R1	2100	800/1000	800/1000
R2	2100	1600	400
R3 <sup>(1)</sup>	2100	600-1200	500
R4 <sup>(2)</sup>	1200	800	300
R5 <sup>(3)</sup>	430-1060	330-855	200-350

overall service weight 950 kg

1) Dimensions depend on direction of power outlets:  
Passing through switchboard = 2100x800x800 mm  
One direction = 2100x800x1000 mm

Width of switchboard R1 may be extended in special cases.

2) Switchboard's width depends on size of frequency changers.

3) Switchboard's height depends on MWM. Standard is 1200 mm.

4) Switchboard's dimension depends on number of dry coolers' fans.

## Caution

Manufacturer reserves the right to alter this document and the linked source materials.



## General Description of CHP Unit

The Quanto D series TEDOM Combined Heat and Power Generation Units (hereinafter CHP units) are the high-performance machines within a range from 400 to 2000kWel, in which industrial engines of renowned producers are used. The block arrangement of these units contains the motor-generator set, heat installation and control system securing all operational and safety functions. CHP unit's heat system is formed by engine-generator set, placed on basic frame and equipped with sound enclosure, and exhaust gas module. The loose delivery includes exhaust silencer, gas train and free-standing electric switchboards. CHP units are equipped with the synchronous generators. CHP unit is intended to be operated on the gas fuels. CHP unit is in sound enclosure version, which is intended for installation into the housed machine room. You will find specific parameters of individual Quanto D400 to D2000 output series CHP units in relevant Datasheets.

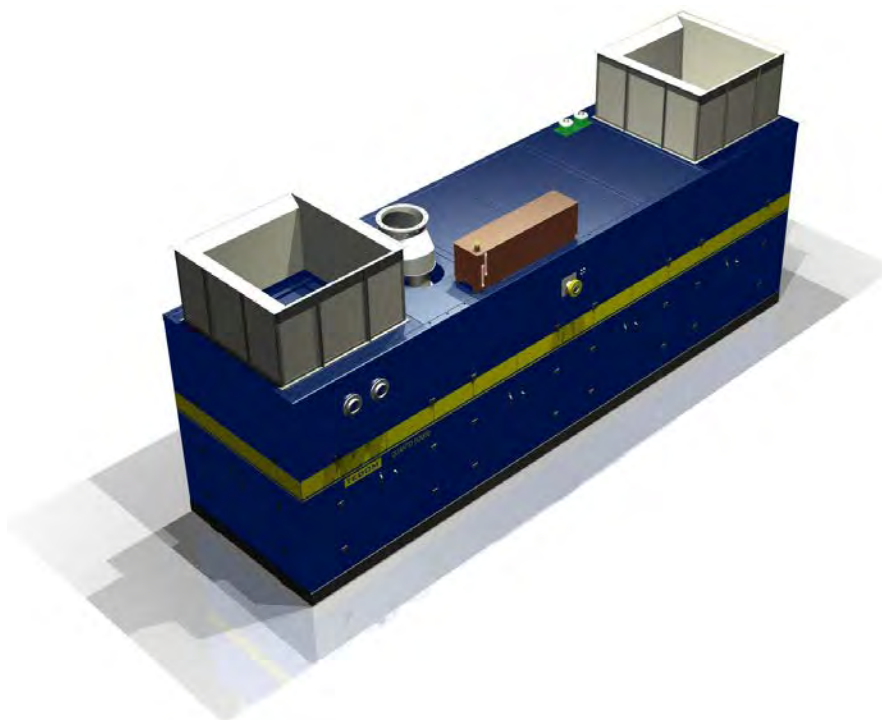
version	sound enclosure
power series	Quanto: D400, D600, D800, D1200, D1600, D2000
fuel	natural gas, biogas

### Advantages of TEDOM CHP unit

- automatic air-fuel ratio control – the way to cut down emissions belongs to the standard equipment of CHP unit
- CHP unit forms an easily attachable compact whole
- CHP unit shows low noise level by using the sound enclosure
- possibility to adapt to various temperature drops of the heating systems
- owing to the modular arrangement of the control system, the number of binary and analogue inputs to monitor and control the follow-up plants can be extended easily
- the basic signals for the CHP unit control (external emergency stop, external activation) can be connected to the customer's terminal box
- TEDOM CHP units are unceasingly innovated on the basis of the knowledge from the already realized job orders

As enacted by the Notified Body 1015\*, the " E-30-01001-10" Certificate was issued to confirm the compliance of the Quanto series products with the requirements of Directive 2009/142/EC (Government Decree No. 22/2003 Coll.). TEDOM is also the holder of the QMS and EMS Quality Management Certificates. On the basis of the tests performed on the control switchboard, the Electro-technical Testing Institute, Certification Body No. 3018, accredited by the Czech Accreditation Institute, Public Service Company, granted Certificate according to ČSN EN 45011. Among others, the product is certified for EAC states and Ukraine.

\* Machinery Testing Institute in Brno



Illustrative picture

## Thermal System

In terms of the heat output extraction, the CHP unit's heat system is formed by secondary and aftercooler circuit. The maximum heat output of the unit is a sum of the heat outputs of both circuits when they are utilized to their full capacity.

### Secondary circuit

It represents a circuit which is used to deliver the main heat output of CHP unit to the heating system. Secondary circuit transfers heat output from primary circuit's plate exchanger and from exhaust gas exchanger. Observance of the maximum permissible return water temperature is an absolute prerequisite for the CHP unit to operate flawlessly. The circuit is not equipped with circulating pump. Circuit is equipped with three-way valve with actuator (including control) for achievement temperature stabilization of water returning into secondary circuit. Components of secondary circuit are fitted on engine-generator set in sound enclosure and also on exhaust gas module. During CHP unit installation, pipe connection of them has to be performed.

If it is not possible to remove heat output of circuit, heat output of circuit is led out by cooling unit for emergency cooling, which can be delivered.

The heating water to charge the hydraulic circuits must be treated; its composition must correspond to the "Technical instructions".

### Primary circuit

It represents inner enclosed pressure circuit that takes off the heat from engine jacket water to pass it into the secondary circuit.

### Aftercooler circuit

It represents the filling mixture cooling circuit. The utilization level of the heat power from this circuit and its cooling both influences immediately the attainment of the basic technical data. The circuit is equipped with expansion vessel, pressure relief valve, three-way valve and circulating pump.

The aftercooler circuit's heat power can be used in the low-temperature circuits (hot service water pre-heating, heating of water in swimming pools or other engineering units). If this heat cannot be utilized if the attainment of permanent rated electrical output is required, it must be wasted in the outer dry cooler (water-air heat exchanger). This dry cooler can be supplied individually.

## Fuel, Gas Inlet

T CHP units can be operated on natural gas, biogas, landfill gas (the fuels can be further modified as agreed upon with the Technical Office. The limit parameters of biogas and other fuels that limit their fitness for use are given in the "Technical instructions" document. The CHP unit's gas train is constructed in conformity with TPG 811 01 and it contains a ball valve, gas filter, set of two independent quick-acting electromagnetic valves with de-aeration of spacer to shut off the gas inlet when the CHP unit is turned off.

This set is loose-delivered with engine-generator set (intended for installation into gas train). Internal part of gas train, in engine-generator set, contains the gas pressure zero governor and expansion joint for connection to mixer. Gas fixture of suitable size with adequate accumulation volume is required for the correct operation of CHP unit to avoid gas pressure drop in the distribution system at the moment of incremental gas offtake. The gas fixture will be terminated with a manual gas stop and fitted with a pressure gauge. Then, it is necessary to connect outlet of electromagnetic valves spacer de-aeration with de-aeration pipeline of machine room.

## Combustion and Ventilation Air

Non-usable heat (radiated from hot parts of the CHP unit) is removed from unit by ventilation air, which enters and leaves the unit by ventilation holes on the sound enclosure roof. It is possible to connect ventilation pipeline on flanges. Flow of ventilation air is secured by fans on the roof of sound enclosure. Inlet and outlet ventilation silencer is included in loose-delivery for installation in ventilation system of machine room.

## Exhaust Gas and Condensate Outlet

Exhaust gas outlet from engine-generator set is ended by flange. This flange has to be connected by pipe system with exhaust gas module. Exhaust gas module is formed by frame construction, on which catalytic converter, exhaust gas exchanger and three-way valve of secondary circuit is placed.

An exhaust silencer has to be installed into exhaust gas line after the module. From exhaust silencer exhaust gas are led into chimney.

Material of the exhaust piping and heat insulation of piping between engine-generator and exhaust gas module must be resistant up to temperatures 700°C, between the module and chimney up to 200°C. During unit start, or at low temperature of inlet water into CHP unit, condensate rises in exhaust gas line (behind exhaust gas exchanger). It has to be led. Condensate is suitable to be led out through condensate separator (possible to deliver with CHP unit). Elimination of condensate is necessary to negotiate with manager of canalization in local installation.

## Noise Parameters

Noise parameters indicate the acoustic pressure level measured in a free acoustic field. The measuring point determination and the evaluation method both comply with ČSN 09 0862, ČSN EN ISO 3746. The noise may contain a tone component.



## Power Switchboard

Electrical part of CHP unit is placed in three separate iron-plate switchboard cabinets (R1, R2 and R3), in switchboard of engine control (R4) and in switchboard of cooling (R5) if needed

### Switchboard K01, K02 (HV) contains:

- generator circuit breaker, which protects generator and part of power line against over-current and works like contacting component for synchronizing generator to mains.
- current measuring transformers
- voltage measuring transformers
- electrometers are fitted here if required

### Switchboard R2 (control) contains:

- central part of control system, eventually extension modules
- control panel of TEM-EVO engine control system and extension I/O modules
- protecting and switching components
- controlling components for maintenance purposes
- power supply 24VDC
- terminals for connecting of analogous sensors, binary switches, controlled devices, remote communication etc.
- X4 customer terminal

### Switchboard R3 contains:

- frequency changers based on needs (aftercooler circuit fans, emergency cooling fans)

### Switchboard R4 contains:

- engine control system TEM-EVO

### Switchboard R5 contains:

- controlling and starting components for aftercooler and emergency cooling fans

## Control system

Control of the unit provides control system ProCon Sight, which allows fully automated operation. It is multiprocessor modular system, consisting from control unit, display unit and extension modules with analogous and binary inputs and outputs.

## Display unit

Thanks to colour display with high resolution, context and navigation buttons provides this display unit easy accessibility of all data about gen-set, measured values and time trends of these values. ProCon Sight display unit can contain up to seven languages, one of them can be graphical (e.g. Chinese, Korean).



### Main features of display unit:

- large 8" colour TFT display with resolution of 800 x 600 pixels
- simpler, faster and more intuitive control by context buttons
- continuous display of status bar
- TRENDS monitoring screen of selected values - diagrams
- clear history display
- Windows CE operating system

### Display unit of TEM EVO control system



### Main features of display unit:

- large 15" colour TFT display
- simpler, faster and more intuitive control by context buttons
- continuous display of status bar
- TRENDS monitoring screen of selected values - diagrams

## Measured values

Control system measures and evaluates following values.

### Electrical values:

- 3xgenerator voltage
- 3xgenerator current
- 3xmains voltage

### Listed electrical values are used for:

- mains parameters evaluating
- automatic synchronization of generator to mains
- calculations and evaluation of needed electrical values

### Technological values:

CHP unit is equipped with set of analogous and binary sensors for monitoring of all needed processes to optimize them. Optimization is performed by appropriate self-consumption outputs.

## Ways of control

### Local:

- by buttons located on control system or on display unit

### Remote (at request):

- by voltage-free contacts (external timer, superior control system etc.)
- according object consumption level or to requested power level
- from local or remote PC
- via SMS messaging

### Regulation according to object consumption (at request):

- information about object consumption is provided to controller by power transducer, which evaluates direction and quantity of import /export from/to mains

### Regulation to required power (at request):

- by analogous signal – e.g. 0/4÷20mA
- via data communication – e.g. protocol MODBUS-RTU

## Gen-set operation monitoring

### From local PC – connection possibilities:

- RS232
- RS485
- USB

### From remote PC – connection possibilities:

- analogous modem
- GSM modem
- internet

### Via SMS messaging

## Linked Source Materials

- Datasheet
- dimensional drawing
- diagram
- offered accessories for CHP unit at request (options)
- generally binding source materials according to the "Technical instructions" document

## Caution

Manufacturer reserves the right to alter this document and the linked source materials.

