



Technical Data Sheet

PowerPipe™ Fuel Pipework



Power Systems



PowerPipe™ 1

Outer skin 54mm inner 13mm flow and return for use on systems up to 650kVA.

PowerPipe™ 2

Outer skin 88mm inner 25mm flow and return for use on systems up to 1500kVA.

Description

A bespoke pipework system specifically designed for diesel generator fuel systems, giving a robust competitive solution to interconnecting generators and fuel tanks

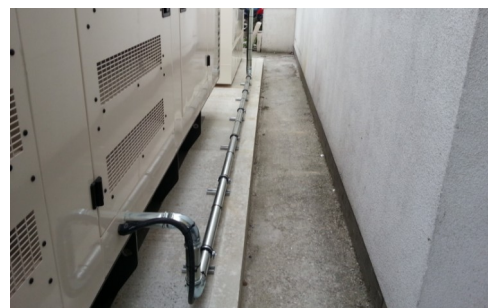
Specification

PowerPipe™ consists of a zinc coated carbon steel outer skin, giving secondary containment and mechanical protection to DIN EN 10305, and an inner flow and return pipe of high pressure reinforced nitrile rubber to BS3492

Standard Features

- Industry Leading and Proven Performance
- High Quality and Robust
- Weatherproof Material
- Single and Double Skin Options to suit varied requirements
- Suitable for all machine sizes and fuel types
- Simple and fast installation

Distributor:



In line with our policy of continuous development, we reserve the right to change specification without notice.